



3 Jubilee Place St. Leonards Road, Windsor, SL4 3FG
£499,950

 **HORLER**

3 Jubilee Place St. Leonards Road, Windsor, SL4 3FG

This three-bedroom semi-detached home arranged over three floors, featuring a fitted kitchen, cloakroom, and a living/dining room. The first floor comprises the principal bedroom with an en-suite shower room and a second bedroom, while the top floor offers a third bedroom. The property further benefits from a private garden and off-street parking, ideally situated in a convenient town centre location.



Entrance

Through a wooden partly glazed front door into:

Hall

With stairs rising to the first floor, radiator and power points.

Kitchen

A fitted white high gloss kitchen with a range of eye and base level units, integrated appliances including a 4 ring gas hob, oven, extractor fan and dishwasher . wall mounted boiler, appliance space for fridge freezer, Recess spotlights, stainless steel sink, drainer and mixer tap and a front aspect double glazed window.

Cloakroom

A front aspect frosted double glazed window, enclosed low level WC, wall mounted wash hand basin and heated towel rail.

Living / dining room

With a rear aspect double glazed window and double doors leading to garden, radiator, large under stairs storage cupboard and power points.

Bedroom

With two rear aspect double glazed windows, radiator and power points.

Ensuite

A partly tiled shower room with shower cubicle, wall mounted wash hand basin, enclosed low level WC, heated towel rail and a side aspect double glazed frosted window.

Bedroom

Two front aspect double glazed windows, radiator and power points.

Family bathroom

A fully tiled bathroom with a side aspect double glazed frosted window, panel enclosed bath with a shower and screen, vanity low level WC, vanity wash hand basin with storage below and a heated towel rail.

Bedroom

With a front and rear Velux window, eaves storage, radiator and power points.

Garden

A timber fence enclosed garden with patio and lawn.

Front of property

Off street parking.

General information

Council Tax Band :

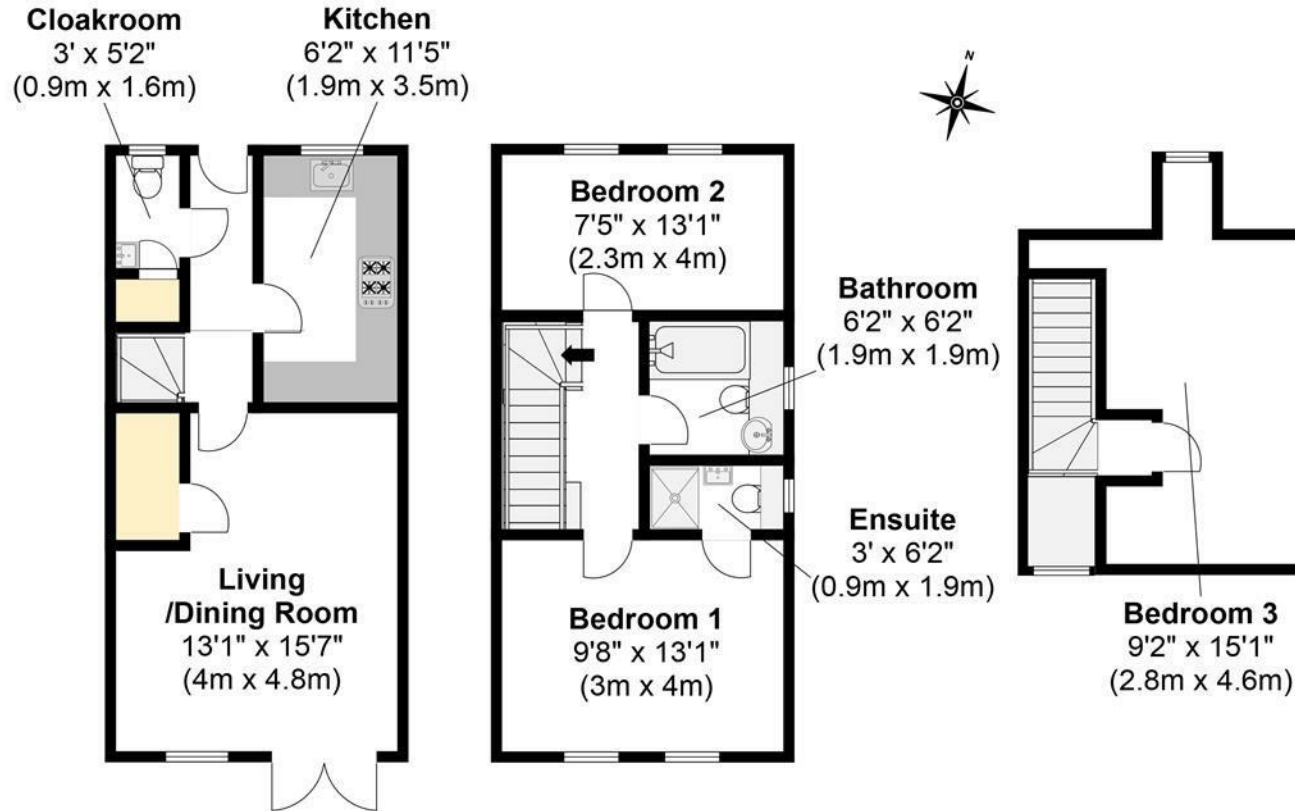
Legal note

Although these particulars are thought to be materially correct, their accuracy cannot be guaranteed and they do not form part of any contract.





Total Approximate Floor Area
947 Square feet
88 Square metres



**Illustrations are for identification purposes only,
measurements are approximate, not to scale.**